

# Canon

imageRUNNER®  
3570 / 4570



CORPORATE  
SYSTEMS



meap  
POWERED BY

imageRUNNER®  
3570 / 4570

CORPORATE SYSTEMS

## EXPERIENCE A BREAKTHROUGH IN MULTIFUNCTION TECHNOLOGY

Introducing the Canon  
imageRUNNER® 3570 and  
imageRUNNER 4570...new-  
generation devices that allow  
you to achieve maximum  
control over office workflow  
and costs.



Your growing business can no longer conform to the rigid workflow processes forced upon it by yesterday's office technology. You need an office solution that can be shaped around your specific needs. Now you can have it with the Canon imageRUNNER 3570/4570.

Designed for the tightest possible integration with your environment, these new-generation imageRUNNER devices deliver unmatched performance, reliability, and innovation. Featuring Canon MEAP® (Multifunctional Embedded Application Platform) technology, every user will be empowered with more effective management of paper- and electronic-based information.

The imageRUNNER 3570/4570 provide greater security measures for your online information sharing and storage needs, plus a host of value-added functions that will make it the centerpiece of your office communications.



## MAXIMUM PRODUCTIVITY FROM START TO FINISH.

Representing a new symbol of innovative technology, quality, and reliability.



Full-color LCD Panel

The imageRUNNER 3570/4570 offer all the functionality you'll ever need in a multifunction machine. Powered by the latest Canon imagePlatform architecture, these models are designed to drive exceptional performance with true concurrent processing across all functions—including copying, printing, scanning, sending, and faxing.

At the heart of the system is a high-quality, digital laser copier/printer engine that delivers output speeds of 35 and 45 pages per minute (Letter), respectively, to keep pace with daily business tasks. Supporting output resolutions up to

2400 x 600-equivalent dpi, the imageRUNNER 3570/4570 ensure every document always looks its best.

Ideal for medium-sized businesses and workgroups alike, the imageRUNNER 3570/4570 offer a number of energy- and time-saving features to reduce costs and meet those important deadlines. And, with innovative hardware and system accessories, you can configure a system to suit your specific needs. For all configurations, an easy-to-use, full-color touch-screen interface provides quick, intuitive operation of all device functions.



**Saddle Finisher** – Creates professional-looking booklets in-house.



**Duplexing Automatic Document Feeder** – Handles multipaged, double-sided originals effortlessly.



**Expandable Paper Supply** – Boosts the system's online paper capacity for uninterrupted productivity.



**Internal Finisher** – Provides neatly stapled and hole-punched (optional) output within the original device footprint.

## DUPLICATE DOCUMENTS, NOT EFFORT

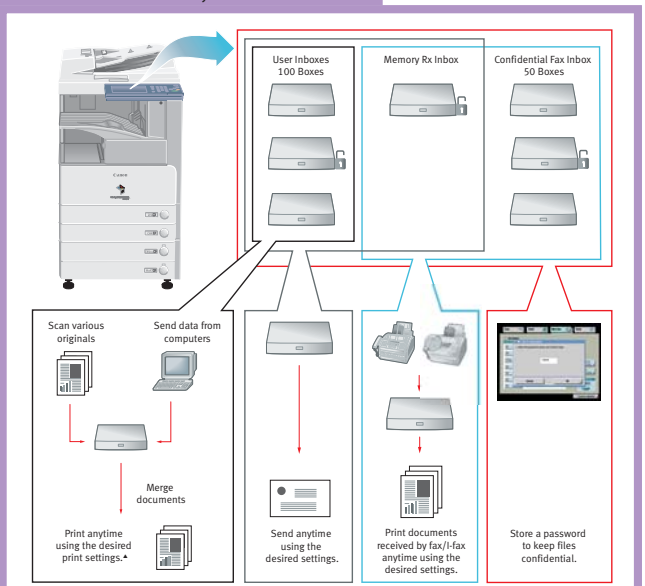
Versatile, productive copy and storage features put document control in the hands of every end-user.

### Advanced Hard-copy Reproduction and Storage

The imageRUNNER 3570/4570 devices are equipped with powerful Canon image processing technology and an extensive memory capacity to maximize system performance. Each system has 512MB RAM, a 20GB Hard Disk Drive, and supports a number of advanced document reproduction and storage features that enhance workflow.

Now you can take advantage of device document manipulation features for accurate reproduction or modification of hard-copy images. Add digital data to copy sets to utilize complete document control and generate creative output. Plus, advanced document creation modes allow for covers, chapters, and inserts—even the ability to use several paper types in the same job.

### Mail Box Functionality

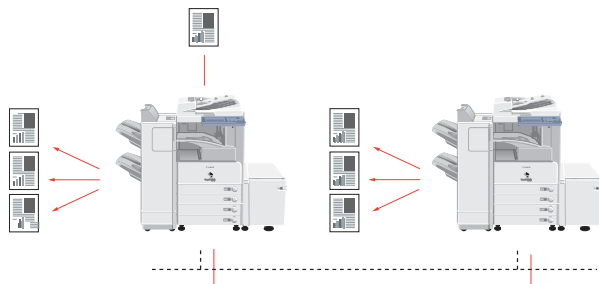


\* Some functions are not available when printing documents that are sent from a computer.

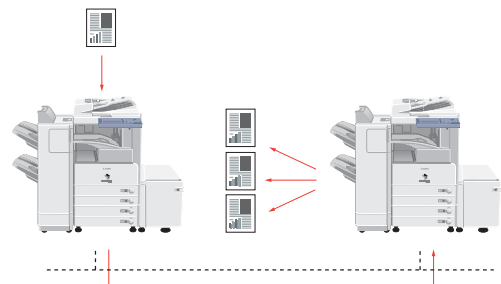
The imageRUNNER 3570/4570 models support value-added Mail Box functions that may serve as your centralized system for information-sharing, on-site document storage, and print-on-demand applications.

### Cascade and Remote Copy\*

#### Cascade Copy



#### Remote Copy



Double system productivity, and enable printing directly to the point-of-need, by leveraging the power of other imageRUNNER 3570/4570 devices installed on the network.

\* Available in 2005. Check with your local Authorized Canon Dealer for availability.

## EFFICIENT COMMUNICATIONS AT NETWORK SPEED

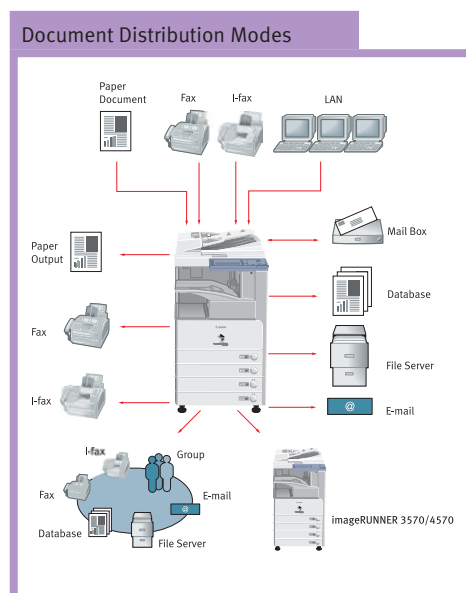
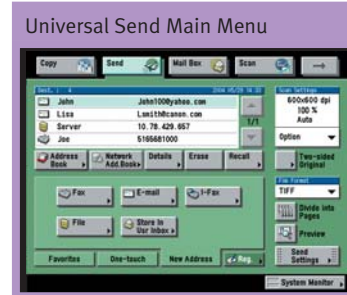
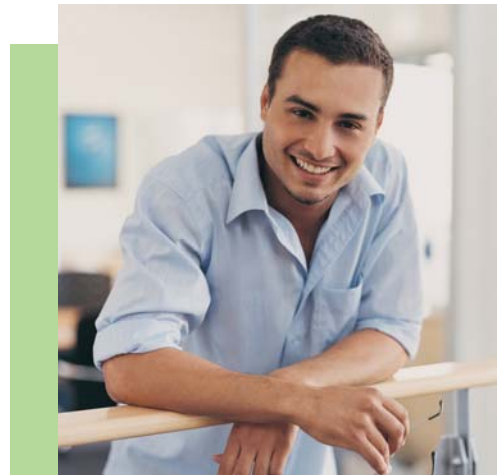
Incorporate innovative document distribution capabilities and transform the way your office communicates.

### Remove the Barriers to Efficient Information Sharing

Add the optional Universal Send™ kit and push digital documents to any network destination—individual or group e-mail addresses or Internet faxes, local Mail Boxes, network folders, and document management systems—in one simple, cost- and time-saving operation. Users may select from several industry-standard file formats, take advantage of searchable PDF (OCR) mode,<sup>†</sup> PDF Encryption,<sup>‡</sup> and URL Send modes, and choose destinations from the system's high-capacity Address Book. With LDAP support, larger organizations can search up to five corporate e-mail servers for accurate, authorized recipient selection without error.

Of course, the imageRUNNER 3570/4570 can support TWAIN-compliant scanning for basic image capturing needs through the Canon Network ScanGear utility, as well as traditional faxing through one or two optional dedicated fax lines—even PC faxing right from the desktop. Through job forwarding features, the system can route all of your incoming communications to other destinations, ensuring that you're never out of reach of important information.<sup>\*\*</sup>

For even greater document distribution needs and populations, connect with eCopy ShareScan™ OP as an embedded application on your device. eCopy easily links the imageRUNNER 3570/4570 with your company's e-mail and networked enterprise applications for secure, paperless distribution and management of data.



<sup>†</sup>Available with optional Universal Send PDF Enhancement Kit.  
<sup>\*\*</sup>Requires optional Universal Send Kit.

## FREE REIGN FOR ALL ON YOUR NETWORK

Unleash the true power of your imageRUNNER 3570/4570 devices for exceptional print performance.

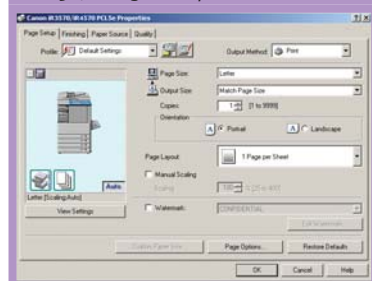
### Easy Integration into Existing Infrastructures

Compatible with most of today's popular operating systems, the imageRUNNER 3570/4570 are at home in any network environment. The standard 10/100Base-T Ethernet interface supports the fastest possible data transfer speeds, while the optional wireless connection\* allows for untethered network expansion and cable-free printing for visiting professionals.

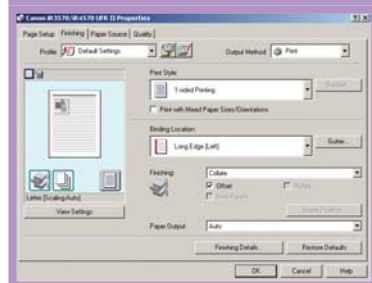
### When You Need Something To Hold On To

When you choose to connect your imageRUNNER device as a network printer, rest assured that Canon has all the bases covered. Install the Canon Multi-PDL Printer Kit-E1 and watch employee productivity soar. With support for PostScript® 3™ emulation and PCL 5e/6 page description languages, the imageRUNNER 3570/4570 are perfectly suited for general office printing applications with superior image quality. For accelerated printing performance, leverage Canon proprietary UFR II (Ultra Fast Rendering) technology, which processes print files with incredible speed.

PCL 5e/6 Page Setup Tab



Canon UFR Driver



Intuitively designed print drivers provide users with access to image manipulation functions, paper supplies, and finishing modes right from the desktop.

### Value-added Printing Functionality

- **Secure Print** for document confidentiality.
- **Integration with imageWARE™ Publishing Manager** for drag-and-drop document building.
- **Direct Print** (PDF, TIFF, JPEG, and PS files) to print documents without opening the authoring application.
- **Bar code printing\*** support for quick and accurate production of bar codes.
- **Web page printing\*** directly from the device control panel for users without access to a computer.

\* Available in 2005. Check with your local Authorized Canon Dealer for availability.

## YOUR BUSINESS IS UNIQUE. WHY NOT YOUR OFFICE EQUIPMENT?

Install, manage, and customize the imageRUNNER 3570/4570 operation and functionality to match your specific needs.



### Now you're in complete control

Don't let networked devices dictate how your business operates. Canon offers all the tools you need to simplify imageRUNNER 3570/4570 configurations, administration, access, and customization—regardless if you're supporting a single unit or a fleet of networked MFPs.

Canon device management utilities, offered either as part of the standard feature-set or as optional upgrades, are embodied within the Canon NetSpot® Suite and Remote UI™ utilities. Authentication features, such as Department ID Mode, provide the ability to track or limit access to the device to those users assigned valid IDs and passwords. Simple Device Login (SDL) and Single Sign-on (SSO) features allow users to enter existing personal IDs and passwords to gain system access.

Once access is granted, a number of advanced security features go to work to prevent data from being compromised or intercepted by outsiders. For even greater protection, the imageRUNNER Security Kit initiates the overwriting of hard disks and completely erases stored data.

### Access for Everyone, Anywhere, Anytime

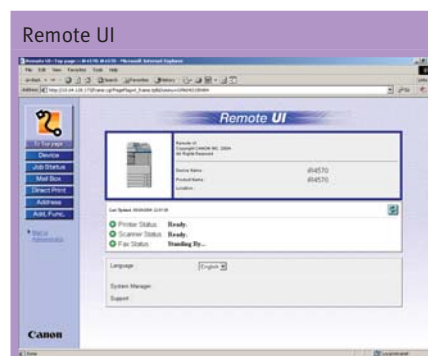
The imageRUNNER 3570/4570 go further to provide access to every authorized user. Disabled users can operate system functions from a laptop or desktop PC using the Remote Operator's Software Kit,\* as well as receive audible job confirmation through the optional Voice Operation Kit.\*

### Tailor Your System to the Way You Work

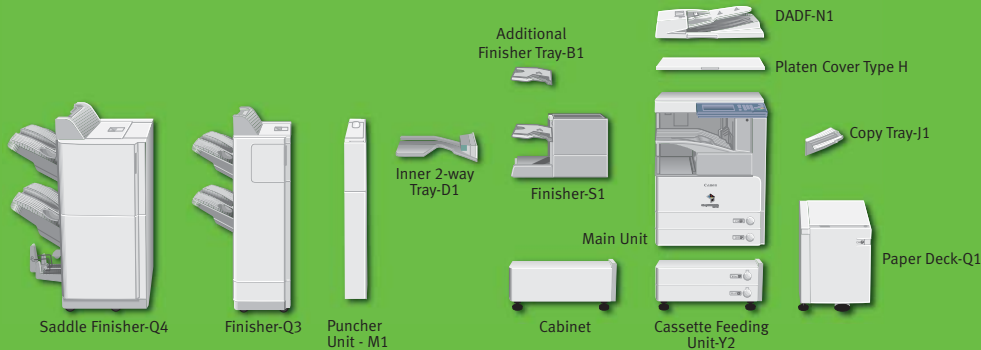
With Canon Java-based MEAP (Multifunctional Embedded Application Platform) architecture, the system can incorporate unique applications that run embedded in the device. The result is total integration of the imageRUNNER 3570 or imageRUNNER 4570 into your business infrastructure.

### Image of a Leader

As a leading producer of network-connected multifunction devices, Canon continues to set new standards for quality, performance, and reliability. That's why you can trust Canon to provide you with solutions to make your corporate workgroup more productive, and any business more competitive.



\* Available in 2005. Check with your local Authorized Canon Dealer for availability.



imageRUNNER®  
3570 / 4570

## imageRUNNER 3570/4570 Specifications

Type:	Digital, Multifunction Imaging System
Imaging System:	Laser Dry Electrostatic Transfer
Developing System:	Dry Mono Component Developing System
Fixing System:	RAPID Fusing System™
Image Server Memory:	Standard 512MB RAM/20GB HDD
First-copy Time:	3.9 Seconds from Platen Glass 5.9 Seconds from Feeder
Warm-up Time:	10 Seconds or Less from Sleep Mode 30 Seconds from Main Power Off
Copy/Print Speed:	35/45 ppm (Letter)
Max. Mail Boxes Supported:	100
Max. Copy Reservation:	5 Jobs
Actual Resolution:	600 dpi x 600 dpi
Interpolated Resolution:	2400 dpi x 600 dpi (Print)
Halftone:	256 Gradations of Gray
Duplexing:	Standard Automatic Trayless Duplexing
Magnification Reduction/ Enlargement:	25% to 400% — Platen 25% to 200% — Feeder (in 1% increments)
Exposure Control:	Automatic or Manual (9 Levels)
Paper Sources	Standard:
	Dual 550-sheet Paper Cassettes (1,100 Sheets)
Optional:	Stack Bypass (50 Sheets) 2,500-sheet Paper Deck (20 lb. Bond) Dual 550-sheet Cassette Feeding Unit (4,750 Sheets Max.)
Multiple Copies:	1 to 999
Paper Weights:	17 lb. to 20 lb. Bond (Cassette) 17 lb. to 32 lb. Bond (Stack Bypass)
Network Interface	Connections:
	10/100Base-T (RJ-45) 29-7/8" x 22-1/4" x 27-5/8" (761mm x 565mm x 700mm)
Installation Space: (W x D):	34" x 27-5/8"
Weight:	190 lb. (86.2kg)
Power Requirements:	120V AC, 60Hz, 10A
Power Consumption:	1.35kW (Max.)
Drum:	Organic Photo Conductor (OPC) — Estimated Yield: 85,000 Impressions
Toner Yield:	24,000 @ 6% Coverage

### Optional Accessories

<b>Universal Send Kit-B1</b>	
Sending Methods:	E-mail, I-fax, Super G3 Fax (Optional), User Inbox, File Server (IPX, FTP, SMB)
Address Book Capacity:	Max. 1,800 Destinations
File Format:	Max. 5 LDAP Servers
Sending Sizes:	TIFF, PDF, Optional PDF (OCR) Statement to 11" x 17"

### Duplexing Automatic Document Feeder-N1

Acceptable Originals:	Statement to 11" x 17"
Capacity:	50 Sheets (20 lb. Bond/Letter)
Max. Paper Weight:	13 lb. to 32 lb. Bond

### Cassette Feeding Unit-Y2

Paper Capacity:	Dual 550-sheet Paper Cassettes (1,100 Sheets/20 lb. Bond)
Acceptable Paper Sizes:	Statement-R to 11" x 17"
Acceptable Paper Weights:	17 lb. to 20 lb. Bond

### Paper Deck-Q1

Paper Deck Capacity:	2,500 Sheets (20 lb. Bond)
Paper Size:	Letter
Acceptable Paper Weights:	17 lb. to 20 lb. Bond

### Inner 2-Way Tray-D1

Number of Trays:	2 Trays
Tray Capacity	
Lower Output Tray:	250 Sheets (Letter) 100 Sheets (Other Sizes)
Upper Output Tray:	100 Sheets (Letter) 50 Sheets (Other Sizes)
Copy Tray-J1 (Optional):	150 Sheets (Letter)
Acceptable Paper Sizes:	Statement to 11" x 17"
Attachable Accessories:	Copy Tray-J1

### Finisher-S1

Number of Trays:	1 Tray (2nd Tray Optional)
Tray Capacity	
Non-collate, Collate, Group Mode:	1,000 Sheets (Letter, Statement)
Staple Mode:	1,000 Sheets/30 Sets
Tray Capacity (with Additional Finisher Tray-B1)	
Non-collate, Collate, Group Mode:	300 Sheets per Tray (Letter, Statement) 300 Sheets/30 Sets per Tray (Letter)
Staple Mode:	150 Sheets/30 Sets (Legal, 11" x 17") Corner Stapling (11" x 17", Legal, Letter, Letter-R)
Staple Position/Size:	

Max. Stapling Capacity (Up to 20 lb. Bond):	50 Sheets (Letter)
Attachable Accessories:	Puncher Unit-R1 Additional Finisher Tray-B1 Copy Tray-J1

### Finisher-Q3/Saddle Finisher-Q4

Number of Trays:	2 Trays
Tray Capacity	
Non-collate, Collate, and Group Mode:	1,000 Sheets (Letter, Statement) 500 Sheets (11" x 17", Legal, Letter-R)
Staple Mode:	1,000 Sheets/30 Sets (Letter) 500 Sheets/30 Sets (11" x 17", Legal, Letter-R)

Max. Stapling Capacity	
Corner, Double:	50 Sheets (Letter), 30 Sheets (Letter-R, Legal, 11" x 17")
Saddle-stitching (Available on Saddle Finisher-Q4 Only)	
Acceptable Paper Sizes:	Letter-R, Legal, 11" x 17"
Capacity/Tray:	1 to 5 Sheets/25 Sets 6 to 10 Sheets/15 Sets 11 to 15 Sheets/10 Sets
Max. Stapling Capacity/Set:	15 Sheets
Folding:	V-fold
Attachable Accessories:	Puncher Unit-M1

### Super G3 Fax Board-Q1/G3 Multi-Line Fax Board-D1

Applicable Line:	Public Switched Telephone Network (PSTN)
Connection Lines	
Super G3 Fax Board-Q1:	One
Super G3 Multi-Line Fax Board-D1:	Two

Sending/Original Sizes:	Statement to 11" x 17" (from Document Feeder)
Recording/Printing Sizes:	Statement to 11" x 17"

### Multi-PDL Printer Kit-E1

Processor:	Canon Custom Processor—Shared
RAM:	512MB—Shared
Hard Disk:	20GB—Shared
PDL Support:	PCL 5e, PCL 6, PostScript 3 Emulation, UFR II

### Interface Connections

Standard:	RJ-45 (10/100Base-T), USB 2.0 High-speed
Optional:	Wireless LAN*

### Network OS:

Windows® 98/Me/2000/XP	
Windows NT® 4.0/Server 2003	
Macintosh® OS 8.0 or Later (PPD)	
Solaris™ 1.1x, 2.5x or Later	
Novell® NetWare® v3.2, 4.1, 4.11, 4.2, 5, 5.1, 6, 6.5 (IPX/SPX™)	

### Additional Optional Accessories and Utilities

Platen Cover Type H	Universal Send PDF Enhancement Kit-B1
Puncher Unit-R1 /-M1	ImageRUNNER Security Kit-A2
Cabinet	eCopy Suite/ShareScan OP
Envelope Feeder Attachment-C1	Bar Code Printing Kit*
Accessibility Handle-A1	Web Pull Print Kit*
Braille Label Kit-A1	Encryption Secure Print Kit*
Copy Tray-J1	Wireless LAN Kit*
Document Tray-J1	Voice Operation Kit*
Card Reader-C1	Remote Operator's Software Kit*
Card Sets	Removable HDD Kit*

\*Available in 2005. Check with your local Authorized Canon Dealer for availability.

© 2004 Canon U.S.A., Inc. All rights reserved.

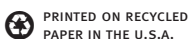
As an ENERGY STAR® Partner, Canon U.S.A., Inc. has determined that these products meet the ENERGY STAR® guidelines for energy efficiency. ENERGY STAR and the ENERGY STAR certification mark are registered U.S. marks. eCopy ShareScan is a trademark of eCopy, Inc. PostScript is a registered trademark of Adobe Systems Incorporated in the United States and/or other countries. Windows and Windows NT are registered trademarks of Microsoft Corporation in the United States and/or other countries. Macintosh is a registered trademark of Apple Computer, Inc. Solaris is a trademark of Sun Microsystems, Inc. in the United States and other countries. Novell and NetWare are registered trademarks of Novell, Inc. in the United States and/or other countries. IPX/SPX is a trademark of Novell, Inc. Canon, IMAGERUNNER, MEAP, NetSpot, and Canon Know How are registered trademarks, and Universal Send, RAPID Fusing System, and the GENUINE logo are trademarks, of Canon Inc. in the United States and may also be registered trademarks or trademarks in other countries. IMAGEWARE and Remote UI are trademarks of Canon U.S.A., Inc. IMAGEANYWARE is a service mark of Canon U.S.A., Inc. in the United States. All other terms and product names may be trademarks or registered trademarks of their respective owners and are hereby acknowledged.

All specifications are subject to change without notice.

Some products shown with optional accessories and equipment.

0047W359

1004-iR3570/4570-100M-PDM



PRINTED ON RECYCLED PAPER IN THE U.S.A.



Canon KNOW HOW®

1-800-OK-CANON  
www.usa.canon.com

Canon U.S.A., Inc.  
One Canon Plaza  
Lake Success, NY 11042